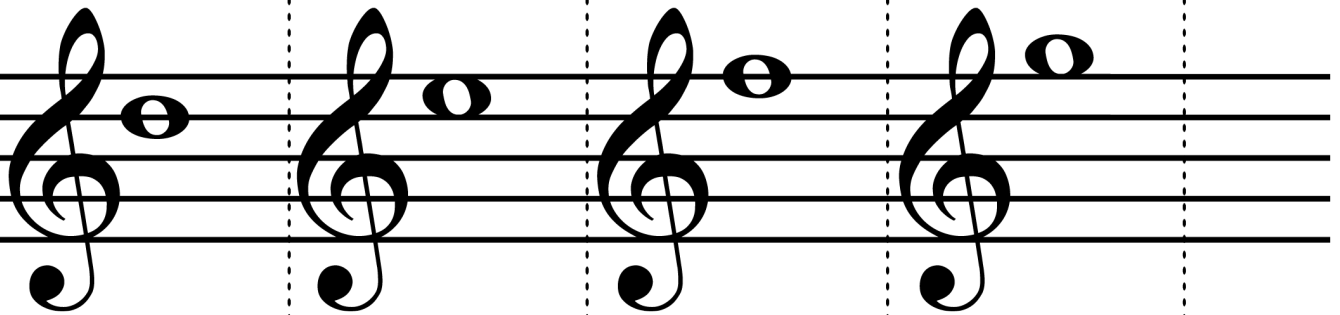
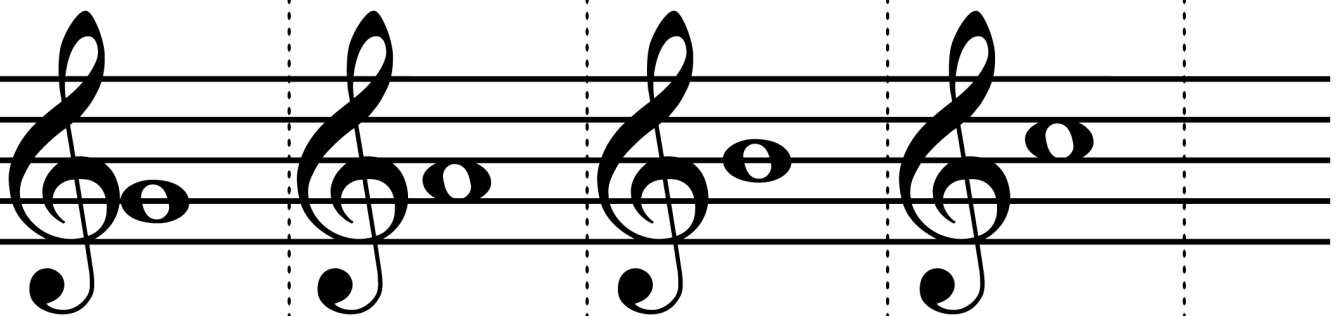
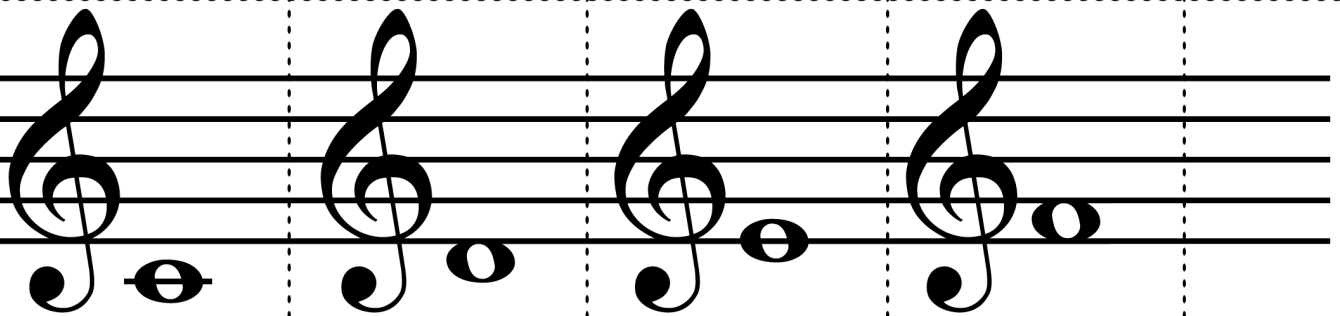
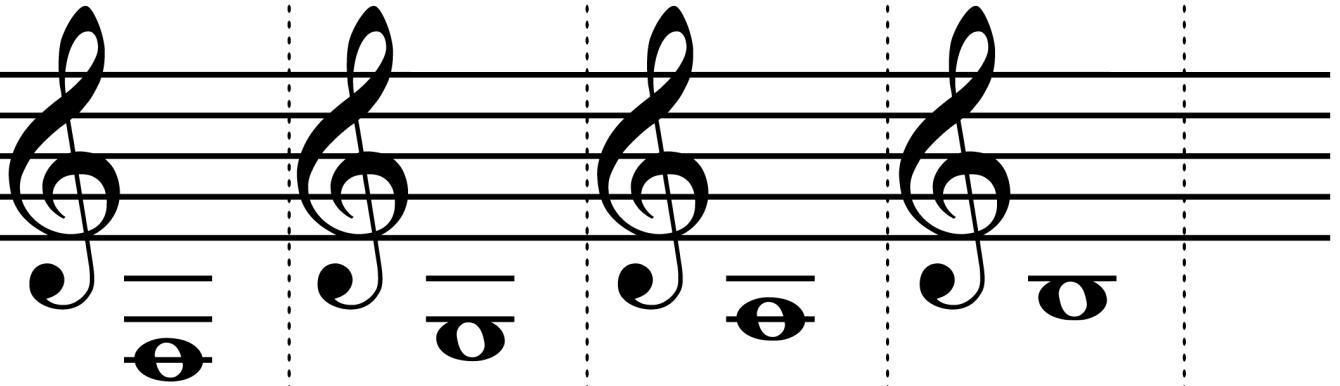


Treble & Bass Clef Flashcards

To assemble your set of flashcards,
cut along the dotted lines and
glue each note onto a separate index card.

José Lawrence Sandoval



This page contains a grid of musical flashcards for treble and bass clefs. The grid is organized into four rows and four columns, with dashed lines separating the individual cards. Each card shows a musical staff with a specific note placement. The first row shows four treble clef staves with notes on the first, second, third, and fourth lines. The second row shows four staves: the first has a treble clef with a note on the first space, and the next three have bass clefs with notes on the first, second, and third spaces. The third row shows four bass clef staves with notes on the first, second, third, and fourth lines. The fourth row shows four bass clef staves with notes on the first, second, third, and fourth spaces.

